

Lakehead Source Protection Area Terms of Reference
(As approved by the Minister of Environment – May 25, 2009)



Lakehead Region
Conservation Authority
Conserve Today...For A Better Tomorrow

LAKEHEAD Source Protection AREA

Lakehead Source Protection Committee

Terms of Reference for the Lakehead Source Protection Area

(As approved by the Minister of Environment – May 25, 2009)

April 14, 2009

Under the Clean Water Act, 2006 (Ontario Regulation, 287/07)

Lakehead Source Protection Area Terms of Reference
(As approved by the Minister of Environment – May 25, 2009)

Statement from the Lakehead Source Protection Committee

The purpose of the Terms of Reference for Lakehead Source Protection Area is to provide an outline of the work that needs to be undertaken and who is responsible for carrying out the work in order to complete the Assessment Report and Source Protection Plan in accordance with the “Clean Water Act, 2006” and its Regulations. In the preparation of the Draft Proposed Terms of Reference, the Lakehead Source Protection Committee worked closely with the Lakehead Source Protection Authority and member Municipalities to ensure that everyone involved understands the nature and scope of the tasks they have been assigned in the Terms of Reference. The Lakehead Source Protection Committee has also considered the following elements when developing the Terms of Reference:

- the drinking water systems that will be included in the Assessment Report;
- the most appropriate lead organizations or bodies who will undertake each major task;
- the development of Source Protection Planning timelines and budgets;
- work that has already been completed that can be used to fulfill the requirements of the Assessment Report and the Source Protection Plan; and
- any issues or other matters that may have an impact on other Source Protection Committees.

It should be noted that, the Draft Proposed Terms of Reference was developed by the Lakehead Source Protection Committee in May and June 2008, in advance of the legislation of the Assessment Report Regulation, Director’s Rules and Source Protection Plan Regulation. In the absence of required legislation, some sections within the Proposed Terms of Reference concerning the work that needs to be undertaken in the future and the budget associated with this work are estimates based on the best information and guidance from the Ministry of Environment available at the time of development of the document. This is in no way intended to mislead the public but estimates and predictions needed to be made in order to present a complete version of the Proposed Terms of Reference to the Minister of the Environment for approval.

Implementation costs cannot be estimated until it is determined how many local drinking water threats there are and what types of policies will be used to address potential threats. Source Protection Plan policy development is estimated to begin in early 2010. The Lakehead Source Protection Area has repeatedly informed the Ministry of Environment that Municipalities are very concerned about implementation costs and responsibilities associated with implementation and will continue to raise this issue at the Provincial level on behalf of our local Municipalities. The Ministry of Environment needs to provide clear direction of implementation costs and responsibilities to the Source Protection Areas/Regions and Municipalities in this Province in the very near future.

The “Clean Water Act, 2006” clearly states that no compensation will be paid to affected property owners. A financial assistance program called the Ontario Drinking Water Stewardship Program was legislated in June 2008 with the intent of providing some financial assistance to landowners meeting the criteria outlined in the Regulation. The Ontario Drinking Water Stewardship Program currently has guaranteed funding until 2011 to provide grants to undertake “Early Actions” close to Municipal residential drinking water systems in advance of Source Protection Plans. The “Clean Water Act” however, states that the intention of the Ontario Drinking Water Stewardship Program is to also provide financial assistance to persons whose activities or properties are affected by the “Clean Water Act”. The Lakehead Source Protection Area has and will continue to pressure the Province to continue to fund the Ontario Drinking Water Stewardship Program beyond 2011, in order to provide necessary financial assistance to property owners affected by new policies and risk reduction strategies that may result from approved Source Protection Plans.

The overall objective of the Lakehead Source Protection Committee, in partnership with local Municipalities and the Ontario government, is to protect the quality and quantity of present and future sources of municipal residential drinking water in the Lakehead Source Protection Area. The Lakehead Source Protection Committee will continue to work and consult with stakeholders

Lakehead Source Protection Area Terms of Reference
(As approved by the Minister of Environment – May 25, 2009)

and participants to gather technical knowledge on which well-informed, consensus-based decisions can be made in an open and consultative manner. The Lakehead Source Protection Committee will aim to propose policies in the Lakehead Source Protection Plan that are appropriate, effective, economical and fair for local Municipalities and will make use of the available science to assess Municipal residential drinking water threats and issues. Where there is uncertainty, the Lakehead Source Protection Committee will be mindful of the precautionary approach.

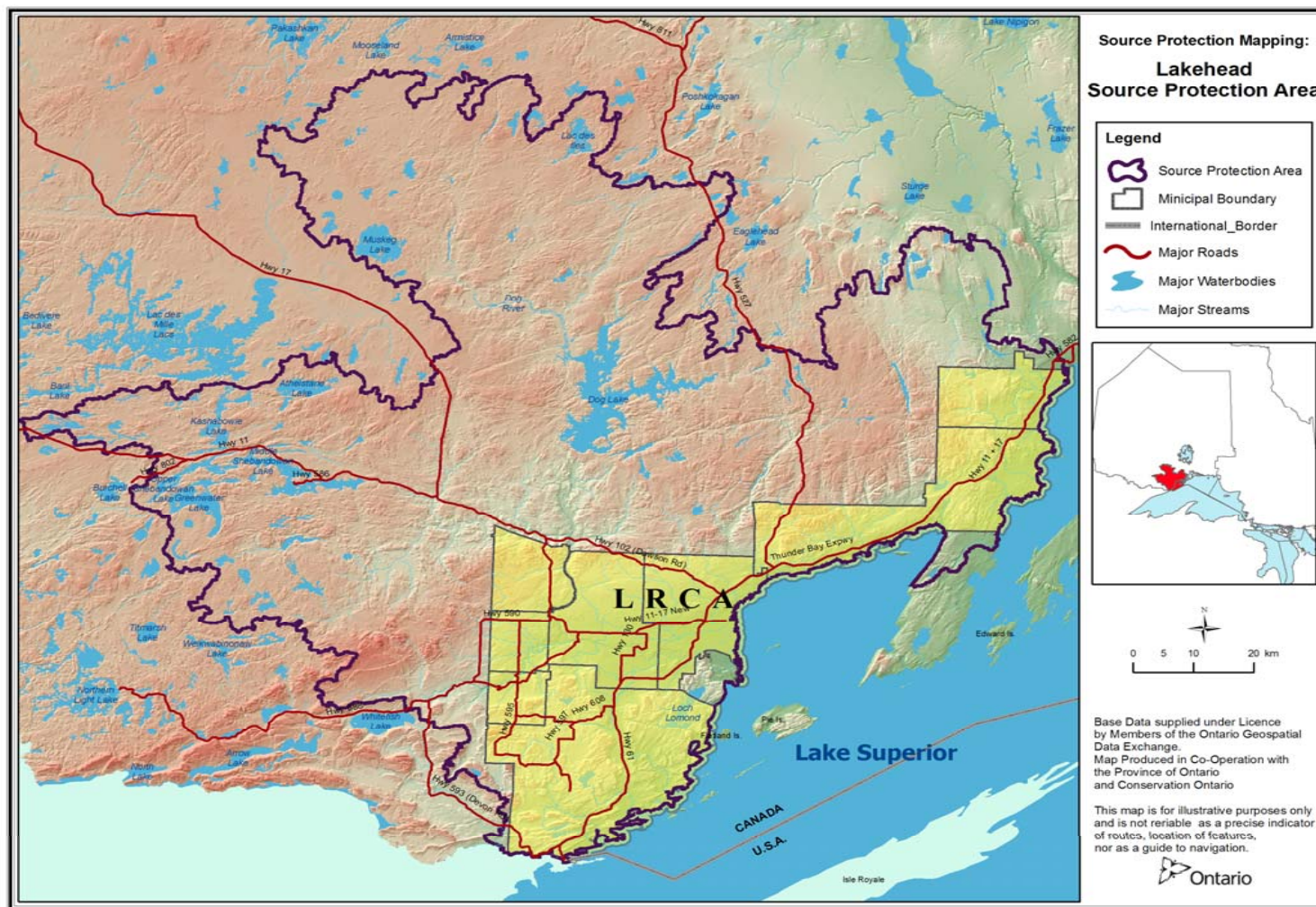
Lakehead Source Protection Area Terms of Reference
 (As approved by the Minister of Environment – May 25, 2009)

Table of Contents

Map of Source Protection Area	5
List of Municipalities Located in the Lakehead Source Protection Area.....	6
List of Municipal Residential Drinking Water System(s)	6
List of Drinking Water System(s) Included by Municipal Council Resolution	7
List of Drinking Water Systems Serving Reserve(s)	7
List of Fully or Partially Exempted Municipal Residential Drinking Water System(s)	7
List of Drinking Water System(s) Included by Minister of the Environment	7
List of Matter(s) that Affect Other Source Protection Committees	7
The Work Plan to Complete the Assessment Report	8
The Work Plan to Complete the Source Protection Plan.....	10
The Date the Source Protection Plan is to be Submitted to the Minister for Approval by the Lakehead Source Protection Authority:.....	11
Council Resolution(s) to Include Drinking Water System(s)	11
Council Resolution(s) to Exempt Municipal Residential Drinking Water System(s)	11
Detailed Information on Municipal Residential Drinking Water System(s)	12
Detailed Information on Drinking Water System(s) Included by Municipal Council Resolution	13
Detailed Information on Drinking Water System(s) Included by Bands Serving Reserve(s).....	13
Detailed Information on Fully or Partially Exempted Municipal Residential Drinking Water System(s).....	13
Detailed Information on Drinking Water System(s) Included by the Minister of the Environment	13
Detailed Work Plan to Complete the Assessment Report	14
Detailed Work Plan to Complete the Source Protection Plan	19
Summary of Financial Statistics	22
Estimated Costs for Tasks by Fiscal Year.....	23
Process Checklist	25
Appendix 1: Full Task Descriptions	27

Lakehead Source Protection Area Terms of Reference
 (As approved by the Minister of Environment – May 25, 2009)

Map of Source Protection Area



Lakehead Source Protection Area Terms of Reference
 (As approved by the Minister of Environment – May 25, 2009)

List of Municipalities Located in the Lakehead Source Protection Area

Legal Name of Municipality
City of Thunder Bay
Municipality of Oliver Paipoonge
Municipality of Neebing
Municipality of Shuniah
Township of Dorion
Township of Conmee
Township of Gillies
Township of O'Connor

List of Municipal Residential Drinking Water System(s)

Type of System (existing or planned)	Drinking Water System Number	Drinking Water System Name	Owner	Operating Authority	Type of Source Water (surface, ground, both)
Existing	260001081	ROSSLYN VILLAGE SUBDIVISION WELL SUPPLY	OLIVER PAIPOONGE, THE CORPORATION OF THE MUNICIPALITY OF	2017376 ONTARIO LTD. (WATER QUALITY SERVICE)	Groundwater
Existing	220000273	THUNDER BAY (BARE POINT ROAD) WATER TREATMENT PLANT	THUNDER BAY, THE CORPORATION OF THE CITY OF	THUNDER BAY, THE CORPORATION OF THE CITY OF	Surface Water

Lakehead Source Protection Area Terms of Reference
(As approved by the Minister of Environment – May 25, 2009)

List of Drinking Water System(s) Included by Municipal Council Resolution

(Not Municipal Residential Drinking Water Systems)

NONE IN THE LAKEHEAD SOURCE PROTECTION AREA

List of Drinking Water Systems Serving Reserve(s)/First Nation Communities

(Not Municipal Residential Drinking Water Systems)

NONE IN THE LAKEHEAD SOURCE PROTECTION AREA

List of Fully or Partially Exempted Municipal Residential Drinking Water System(s)

NONE IN THE LAKEHEAD SOURCE PROTECTION AREA

List of Drinking Water System(s) Included by Minister of the Environment

(Not Municipal Residential Drinking Water Systems)

NONE IN THE LAKEHEAD SOURCE PROTECTION AREA

List of Matter(s) that Affect Other Source Protection Committees

NONE IN THE LAKEHEAD SOURCE PROTECTION AREA

Lakehead Source Protection Area Terms of Reference
(As approved by the Minister of Environment – May 25, 2009)

The Work Plan to Complete the Assessment Report

By Source Protection Area/ Drinking Water System Name	Task	Assigned Lead(s)	Estimated Completion Date	Estimated Cost
Lakehead Source Protection Area	Coordinating and supporting projects for the Assessment Report.	Lakehead Region Conservation Authority	2010-Mar-31	\$2,043,567
Lakehead Source Protection Area	Undertaking communications initiatives for the Assessment Report.	Lakehead Region Conservation Authority	2010-Mar-31	\$135,219
Lakehead Source Protection Area	Information management for the Assessment Report preparation.	Lakehead Region Conservation Authority	2010-Mar-31	\$289,353
Lakehead Source Protection Area	Undertaking a Watershed Characterization Report.	Lakehead Region Conservation Authority	2008-Mar-01	\$2,450
Lakehead Source Protection Area	Conducting a Conceptual Water Budget.	Lakehead Region Conservation Authority	2007-Jun-30	\$69,272
Lakehead Source Protection Area	Conducting a Tier 1 Water Budget Analysis and Water Quantity Stress Assessment.	Lakehead Region Conservation Authority	2008- Aug-30	\$43,305
Lakehead Source Protection Area	Consultation on the overall proposed Assessment Report.	Lakehead Region Conservation Authority	2010-Mar-31	\$55,400
Lakehead Source Protection Area	Other Assessment Report preparation tasks: Cannot define tasks at this time - Pending Assessment Report Regulation, Director's Rules and Guidance.	Lakehead Region Conservation Authority	2010-Mar-31	\$96,000
Municipal Residential Drinking Water Systems				
THUNDER BAY (BARE POINT ROAD) WATER TREATMENT PLANT	Delineating and applying vulnerability scores to Intake Protection Zones (IPZ's).	City of Thunder Bay in partnership with the Lakehead Region Conservation Authority.	2009-Dec-31	\$108,224
ROSSLYN VILLAGE SUBDIVISION WELL SUPPLY	Delineating and applying vulnerability scores to Wellhead Protection Areas (WHPA's).	Lakehead Region Conservation Authority in partnership with the Municipality of Oliver Paipoonge	2009-Dec-31	\$34,421
THUNDER BAY (BARE POINT ROAD) WATER TREATMENT PLANT	Identifying issues, inventorying threats and assessing hazards in Intake Protection Zones (IPZ's).	City of Thunder Bay in partnership with the Lakehead Region Conservation Authority.	2009-Dec-31	\$110,724

Lakehead Source Protection Area Terms of Reference

(As approved by the Minister of Environment – May 25, 2009)

ROSSLYN VILLAGE SUBDIVISION WELL SUPPLY	Identifying issues, inventorying threats and assessing Hazards in Wellhead Protection Areas (WHPA's).	Lakehead Region Conservation Authority in partnership with the Municipality of Oliver Paipoonge.	2009-Dec-31	\$27,191
THUNDER BAY (BARE POINT ROAD) WATER TREATMENT PLANT	Assess risk in Intake Protection Zones (IPZ's).	City of Thunder Bay in partnership with the Lakehead Region Conservation Authority.	2009-Dec-31	\$69,973
ROSSLYN VILLAGE SUBDIVISION WELL SUPPLY	Assess risk in Wellhead Protection Areas (WHPA's).	Lakehead Region Conservation Authority in partnership with the Municipality of Oliver Paipoonge.	2009-Dec-31	\$48,539
Drinking Water Systems By Municipal Resolution		NONE IN THE LAKEHEAD SOURCE PROTECTION AREA		
Drinking Water Systems By Band Resolution		NONE IN THE LAKEHEAD SOURCE PROTECTION AREA		
Fully or Partially Exempt Drinking Water Systems		NONE IN THE LAKEHEAD SOURCE PROTECTION AREA		
Drinking Water Systems Included By Minister		NONE IN THE LAKEHEAD SOURCE PROTECTION AREA		

Lakehead Source Protection Area Terms of Reference
(As approved by the Minister of Environment – May 25, 2009)

The Work Plan to Complete the Source Protection Plan

By Source Protection Area/ Drinking Water System Name	Task	Assigned Lead(s)	Estimated Completion Date	Estimated Cost
Lakehead Source Protection Area	Coordinating and supporting projects for the Source Protection Plan (SPP).	Lakehead Region Conservation Authority	2012-Aug-20	\$1,237,050
Lakehead Source Protection Area	Undertaking communications initiatives for the Source Protection Plan (SPP).	Lakehead Region Conservation Authority	2012-Aug-20	\$94,290
Lakehead Source Protection Area	Information management for Source Protection Plan (SPP) preparation	Lakehead Region Conservation Authority	2012-Aug-20	\$144,200
Lakehead Source Protection Area	Policy development to address drinking water threats (where required and/or permissible in Act & Regs)	Lakehead Region Conservation Authority	2012-Aug-20	\$0
Lakehead Source Protection Area	Policy development for monitoring (where required, advisable and/or permissible in Act & Regs)	Lakehead Region Conservation Authority	2012-Aug-20	\$0
Lakehead Source Protection Area	Establishing timelines for policy implementation	Lakehead Region Conservation Authority	2012-Aug-20	\$0
Lakehead Source Protection Area	Consultation on the overall proposed Source Protection Plan (SPP).	Lakehead Region Conservation Authority	2012-Aug-20	\$64,000
Lakehead Source Protection Area	Other Source Protection Plan Preparation Tasks: Cannot define tasks at this time - Pending Source Protection Plan Regulation and Guidance. Using allocation in 'Other Assessment Report Preparation Tasks' as a guideline.	Lakehead Region Conservation Authority	2012-Aug-20	\$112,000
Municipal Residential Drinking Water Systems		THUNDER BAY (BARE POINT ROAD) WATER TREATMENT PLANT; ROSSLYN VILLAGE SUBDIVISION WELL SUPPLY		
Drinking Water Systems By Municipal Resolution		NONE IN THE LAKEHEAD SOURCE PROTECTION AREA		
Drinking Water Systems By Band Council Resolution		NONE IN THE LAKEHEAD SOURCE PROTECTION AREA		
Fully or Partially Exempt Drinking Water Systems		NONE IN THE LAKEHEAD SOURCE PROTECTION AREA		
Drinking Water Systems Included By Minister		NONE IN THE LAKEHEAD SOURCE PROTECTION AREA		

Lakehead Source Protection Area Terms of Reference
(As approved by the Minister of Environment – May 25, 2009)

The Date the Source Protection Plan is to be Submitted to the Minister for Approval by the Lakehead Source Protection Authority:

2012-Aug-20

Council Resolution(s) to Include Drinking Water System(s)

NONE IN THE LAKEHEAD SOURCE PROTECTION AREA

Council Resolution(s) to Exempt Municipal Residential Drinking Water System(s)

NONE IN THE LAKEHEAD SOURCE PROTECTION AREA

Lakehead Source Protection Area Proposed Terms of Reference
 (As approved by the Minister of Environment – May 25, 2009)

Detailed Information

Detailed Information on Municipal Residential Drinking Water System(s)

Drinking Water System Type (planned or existing)	Drinking Water System Number	Drinking Water System Name	Owner	Operating Authority	Source Water Type (surface, ground, both)	Number of Wells
Existing	220000273	THUNDER BAY (BARE POINT ROAD) WATER TREATMENT PLANT	THUNDER BAY, THE CORPORATION OF THE CITY OF	THUNDER BAY, THE CORPORATION OF THE CITY OF	Surface Water	0
Number of Surface Water Intakes	Comments					
3						

Drinking Water System Type (planned or existing)	Drinking Water System Number	Drinking Water System Name	Owner	Operating Authority	Source Water Type (surface, ground, both)	Number of Wells
Existing	260001081	ROSSLYN VILLAGE SUBDIVISION WELL SUPPLY	OLIVER PAIPOONGE, THE CORPORATION OF THE MUNICIPALITY OF	2017376 ONTARIO LTD. (WATER QUALITY SERVICE)	Groundwater	2
Number of Surface Water Intakes	Comments					
0						

Lakehead Source Protection Area Proposed Terms of Reference
(As approved by the Minister of Environment – May 25, 2009)

Detailed Information on Drinking Water System(s) Included by Municipal Council Resolution

(Not Municipal Residential Drinking Water Systems)

NONE IN THE LAKEHEAD SOURCE PROTECTION AREA

Detailed Information on Drinking Water System(s) Included by Bands Serving Reserve(s)/ First Nation Communities

(Not Municipal Residential Drinking Water Systems)

NONE IN THE LAKEHEAD SOURCE PROTECTION AREA

Detailed Information on Fully or Partially Exempted Municipal Residential Drinking Water System(s)

NONE IN THE LAKEHEAD SOURCE PROTECTION AREA

Detailed Information on Drinking Water System(s) Included by the Minister of the Environment

(Not Municipal Residential Drinking Water Systems)

NONE IN THE LAKEHEAD SOURCE PROTECTION AREA

Lakehead Source Protection Area Proposed Terms of Reference
(As approved by the Minister of Environment – May 25, 2009)

Detailed Work Plan to Complete the Assessment Report

By Source Protection Area	Task	Assigned Lead(s)	Estimated Start Date	Estimated Completion Date
Lakehead Source Protection Area	Coordinating and supporting projects for the Assessment Report.	Lakehead Region Conservation Authority	2005-Jan-03	2010-Mar-31
Comments		Defined Geographic Area		Estimated Cost
				\$2,043,567

By Source Protection Area	Task	Assigned Lead(s)	Estimated Start Date	Estimated Completion Date
Lakehead Source Protection Area	Undertaking communications initiatives for the Assessment Report.	Lakehead Region Conservation Authority	2005-Jan-01	2010-Mar-31
Comments		Defined Geographic Area		Estimated Cost
				\$135,219

By Source Protection Area	Task	Assigned Lead(s)	Estimated Start Date	Estimated Completion Date
Lakehead Source Protection Area	Information management for the Assessment Report preparation.	Lakehead Region Conservation Authority	2005-Jan-03	2010-Mar-31
Comments		Defined Geographic Area		Estimated Cost
				\$289,353

By Source Protection Area	Task	Assigned Lead(s)	Estimated Start Date	Estimated Completion Date
Lakehead Source Protection Area	Undertaking a Watershed Characterization Report.	Lakehead Region Conservation Authority	2005-Oct-03	2008-Mar-01
Comments		Defined Geographic Area		Estimated Cost
				\$2,450

Lakehead Source Protection Area Proposed Terms of Reference
 (As approved by the Minister of Environment – May 25, 2009)

By Source Protection Area	Task	Assigned Lead(s)	Estimated Start Date	Estimated Completion Date
Lakehead Source Protection Area	Conducting a Conceptual Water Budget.	Lakehead Region Conservation Authority	2006-Aug-01	2007-Jun-30
Comments		Defined Geographic Area		Estimated Cost
				\$69,272

By Source Protection Area	Task	Assigned Lead(s)	Estimated Start Date	Estimated Completion Date
Lakehead Source Protection Area	Conducting a Tier 1 Water Budget Analysis and Water Quantity Stress Assessment.	Lakehead Region Conservation Authority	2007-Feb-01	2008- Aug-30
Comments		Defined Geographic Area		Estimated Cost
				\$43,305

By Source Protection Area	Task	Assigned Lead(s)	Estimated Start Date	Estimated Completion Date
Lakehead Source Protection Area	Consultation on the overall proposed Assessment Report	Lakehead Region Conservation Authority	2009-Jan-01	2010-Mar-31
Comments		Defined Geographic Area		Estimated Cost
				\$55,400

By Source Protection Area	Task	Assigned Lead(s)	Estimated Start Date	Estimated Completion Date
Lakehead Source Protection Area	Other Assessment Report Preparation Tasks: Cannot define tasks at this time - Pending Assessment Report Regulation, Director's Rules and Guidance.	Lakehead Region Conservation Authority	2008-Oct-20	2010-Mar-31
Comments		Defined Geographic Area		Estimated Cost
Includes \$25,000.00 allocated for Special Projects and Pilot Studies each fiscal year.				\$96,000

Lakehead Source Protection Area Proposed Terms of Reference
 (As approved by the Minister of Environment – May 25, 2009)

By Drinking Water System Name	Task	Assigned Lead(s)	Estimated Start Date	Estimated Completion Date
THUNDER BAY (BARE POINT ROAD) WATER TREATMENT PLANT	Delineating and applying vulnerability scores to Intake Protection Zones (IPZ's).	City of Thunder Bay in partnership with the Lakehead Region Conservation Authority.	2006-Jun-01	2009-Dec-31
Comments		Defined Geographic Area	Estimated Cost	
No cost is shown for Operational Costs because it is anticipated that all work not completed by the City of Thunder Bay, will be done by the Lakehead Source Protection Committee and LRCA Staff. All Staff and Committee costs are captured under task: "Coordinating and Supporting Projects for the Source Protection Plan (SPP)".			\$108,224	

By Drinking Water System Name	Task	Assigned Lead(s)	Estimated Start Date	Estimated Completion Date
ROSSLYN VILLAGE SUBDIVISION WELL SUPPLY	Delineating and applying vulnerability scores to Wellhead Protection Areas (WHPA's).	Lakehead Region Conservation Authority in partnership with the Municipality of Oliver Paipoonge	2007-May-18	2009-Dec-31
Comments		Defined Geographic Area	Estimated Cost	
No cost is shown for Operational Costs because it is anticipated that all work will be done by the Lakehead Source Protection Committee and LRCA Staff. All Staff and Committee costs are captured under task: "Coordinating and Supporting Projects for the Source Protection Plan (SPP)".			\$34,421	

Lakehead Source Protection Area Proposed Terms of Reference
(As approved by the Minister of Environment – May 25, 2009)

By Drinking Water System Name	Task	Assigned Lead(s)	Estimated Start Date	Estimated Completion Date
THUNDER BAY (BARE POINT ROAD) WATER TREATMENT PLANT	Identifying issues, inventorying threats and assessing hazards in Intake Protection Zones (IPZ's).	City of Thunder Bay in partnership with the Lakehead Region Conservation Authority.	2006-Jun-01	2009-Dec-31
Comments		Defined Geographic Area		Estimated Cost
No cost is shown for Operational Costs because it is anticipated that all work not completed by the City of Thunder Bay, will be done by the Lakehead Source Protection Committee and LRCA Staff. All Staff and Committee costs are captured under task: "Coordinating and Supporting Projects for the Source Protection Plan (SPP)".				\$110,724

By Drinking Water System Name	Task	Assigned Lead(s)	Estimated Start Date	Estimated Completion Date
ROSSLYN VILLAGE SUBDIVISION WELL SUPPLY	Identifying issues, inventorying threats and assessing hazards in Wellhead Protection Areas (WHPA's).	Lakehead Region Conservation Authority in partnership with the Municipality of Oliver Paipoonge	2007-May-18	2009-Dec-31
Comments		Defined Geographic Area		Estimated Cost
No cost is shown for Operational Costs because it is anticipated that all work will be done by the Lakehead Source Protection Committee and LRCA Staff. All Staff and Committee costs are captured under task: "Coordinating and Supporting Projects for the Source Protection Plan (SPP)".				\$27,191

Lakehead Source Protection Area Proposed Terms of Reference
 (As approved by the Minister of Environment – May 25, 2009)

By Drinking Water System Name	Task	Assigned Lead(s)	Estimated Start Date	Estimated Completion Date
THUNDER BAY (BARE POINT ROAD) WATER TREATMENT PLANT	Assess risk in Intake Protection Zones (IPZ's).	City of Thunder Bay in partnership with the Lakehead Region Conservation Authority.	2007-Apr-02	2009-Dec-31
Comments		Defined Geographic Area		Estimated Cost
No cost is shown for Operational Costs because it is anticipated that all work not completed by the City of Thunder Bay, will be done by the Lakehead Source Protection Committee and LRCA Staff. All Staff and Committee costs are captured under task: "Coordinating and Supporting Projects for the Source Protection Plan (SPP)".				\$69,973

By Drinking Water System Name	Task	Assigned Lead(s)	Estimated Start Date	Estimated Completion Date
ROSSLYN VILLAGE SUBDIVISION WELL SUPPLY	Assess risk in Wellhead Protection Areas (WHPA's).	Lakehead Region Conservation Authority in partnership with the Municipality of Oliver Paipoonge	2007-May-18	2009-Dec-31
Comments		Defined Geographic Area		Estimated Cost
No cost is shown for Operational Costs because it is anticipated that all work will be done by the Lakehead Source Protection Committee and LRCA Staff. All Staff and Committee costs are captured under task: "Coordinating and Supporting Projects for the Source Protection Plan (SPP)".				\$48,539

Lakehead Source Protection Area Proposed Terms of Reference
(As approved by the Minister of Environment – May 25, 2009)

Detailed Work Plan to Complete the Source Protection Plan

By Source Protection Area	Task	Assigned Lead(s)	Estimated Start Date	Estimated Completion Date
Lakehead Source Protection Area	Coordinating and Supporting Projects for the Source Protection Plan (SPP).	Lakehead Region Conservation Authority	2011-Jan-03	2012-Aug-20
Comments		Defined Geographic Area		Estimated Cost
				\$1,237,050

By Source Protection Area	Task	Assigned Lead(s)	Estimated Start Date	Estimated Completion Date
Lakehead Source Protection Area	Undertaking communications initiatives for the Source Protection Plan.	Lakehead Region Conservation Authority	2011-Jan-03	2012-Aug-20
Comments		Defined Geographic Area		Estimated Cost
				\$94,290

By Source Protection Area	Task	Assigned Lead(s)	Estimated Start Date	Estimated Completion Date
Lakehead Source Protection Area	Information management for Source Protection Plan preparation.	Lakehead Region Conservation Authority	2011-Jan-03	2012-Aug-20
Comments		Defined Geographic Area		Estimated Cost
				\$144,200

By Source Protection Area	Task	Assigned Lead(s)	Estimated Start Date	Estimated Completion Date
Lakehead Source Protection Area	Policy development to address drinking water threats (where required and/or permissible in Act & Regs).	Lakehead Region Conservation Authority	2011-Jan-03	2012-Aug-20
Comments		Defined Geographic Area		Estimated Cost
No cost is shown for this task because it is anticipated that all work will be done by the Lakehead Source Protection Committee and LRCA Staff. All Staff and Committee costs are captured under task: "Coordinating and Supporting Projects for the Source Protection Plan (SPP)".				\$0

Lakehead Source Protection Area Proposed Terms of Reference
 (As approved by the Minister of Environment – May 25, 2009)

By Source Protection Area	Task	Assigned Lead(s)	Estimated Start Date	Estimated Completion Date
Lakehead Source Protection Area	Policy development for monitoring (where required, advisable and/or permissible in Act & Regs).	Lakehead Region Conservation Authority	2011-Jan-03	2012-Aug-20
Comments		Defined Geographic Area		Estimated Cost
No cost is shown for this task because it is anticipated that all work will be done by the Lakehead Source Protection Committee and LRCA Staff. All Staff and Committee costs are captured under task: "Coordinating and Supporting Projects for the Source Protection Plan (SPP)".				\$0

By Source Protection Area	Task	Assigned Lead(s)	Estimated Start Date	Estimated Completion Date
Lakehead Source Protection Area	Establishing timelines for policy implementation.	Lakehead Region Conservation Authority	2011-Jan-03	2012-Aug-20
Comments		Defined Geographic Area		Estimated Cost
No cost is shown for this task because it is anticipated that all work will be done by the Lakehead Source Protection Committee and LRCA Staff. All Staff and Committee costs are captured under task: "Coordinating and Supporting Projects for the Source Protection Plan (SPP)".				\$0

By Source Protection Area	Task	Assigned Lead(s)	Estimated Start Date	Estimated Completion Date
Lakehead Source Protection Area	Consultation on the overall proposed Source Protection Plan.	Lakehead Region Conservation Authority	2011-Jan-03	2012-Aug-20
Comments		Defined Geographic Area		Estimated Cost
				\$64,000

Lakehead Source Protection Area Proposed Terms of Reference
 (As approved by the Minister of Environment – May 25, 2009)

By Source Protection Area	Task	Assigned Lead(s)	Estimated Start Date	Estimated Completion Date
Lakehead Source Protection Area	Other Source Protection Plan Preparation Tasks: Cannot define tasks at this time - Pending Source Protection Plan Regulation and Guidance. Using allocation in 'Other Assessment Report Preparation Tasks' as a guideline.	Lakehead Region Conservation Authority	2011-Jan-03	2012-Aug-20
Comments		Defined Geographic Area		Estimated Cost
Includes \$25,000.00 allocated for Special Projects and Pilot Studies for fiscal years 2010/11 and 2011/12 and first three months of 2013 (\$ 8,333.00).				\$112,000

Lakehead Source Protection Area Proposed Terms of Reference
 (As approved by the Minister of Environment – May 25, 2009)

Summary of Financial Statistics

	Tasks Done by Source Protection Area or Drinking Water System	Estimated Costs for Tasks Under the Assessment Report	Estimated Costs for Tasks Under the Source Protection Plan	Subtotal
	Lakehead Source Protection Area	\$2,734,566	\$1,651,540	\$4,386,106
Municipal Residential Drinking Water Systems				
	ROSSLYN VILLAGE SUBDIVISION WELL SUPPLY	\$110,150	\$0	\$110,150
	THUNDER BAY (BARE POINT ROAD) WATER TREATMENT PLANT	\$288,921	\$0	\$288,921
Drinking Water Systems By Municipal Resolution	N/A	N/A	N/A	N/A
Drinking Water Systems By Band Resolutions	N/A	N/A	N/A	N/A
Drinking Water Systems Included By Minister	N/A	N/A	N/A	N/A
Total Estimated Costs		\$3,133,637	\$1,651,540	\$4,785,177

Lakehead Source Protection Area Proposed Terms of Reference
(As approved by the Minister of Environment – May 25, 2009)

Estimated Costs for Tasks by Fiscal Year

Fiscal Year defined as April 1 to March 31

Drinking Water System Category / Source Protection Area	Tasks	Fiscal Year 04/05	Fiscal Year 05/06	Fiscal Year 06/07	Fiscal Year 07/08	Fiscal Year 08/09	Fiscal Year 09/10	Fiscal Year 10/11	Fiscal Year 11/12	Fiscal Year 12/13
Lakehead Source Protection Area	Coordinating and supporting projects for the Assessment Report.	\$0	\$258,968	\$294,850	\$390,149	\$549,800	\$549,800	\$0	\$0	\$0
Lakehead Source Protection Area	Undertaking communications initiatives for the Assessment Report.	\$0	\$2,326	\$29,991	\$29,902	\$36,500	\$36,500	\$0	\$0	\$0
Lakehead Source Protection Area	Information management for the Assessment Report preparation.	\$0	\$87,585	\$38,308	\$51,820	\$55,820	\$55,820	\$0	\$0	\$0
Lakehead Source Protection Area	Undertaking a Watershed Characterization Report.	\$0	\$0	\$0	\$2,450	\$0	\$0	\$0	\$0	\$0
Lakehead Source Protection Area	Conducting a Conceptual Water Budget.	\$0	\$0	\$59,911	\$9,362	\$0	\$0	\$0	\$0	\$0
Lakehead Source Protection Area	Conducting a Tier 1 Water Budget Analysis and Water Quantity Stress Assessment.	\$0	\$0	\$0	\$24,590	\$18,715	\$0	\$0	\$0	\$0
Lakehead Source Protection Area	Consultation on the overall proposed Assessment Report.	\$0	\$0	\$0	\$0	\$27,700	\$27,700	\$0	\$0	\$0
Lakehead Source Protection Area	Other Assessment Report Preparation Tasks.	\$0	\$0	\$0	\$0	\$48,000	\$48,000	\$0	\$0	\$0
Lakehead Source Protection Area	Coordinating and supporting projects for the Source Protection Plan (SPP).	\$0	\$0	\$0	\$0	\$0	\$0	\$549,800	\$549,800	\$137,450
Lakehead Source Protection Area	Undertaking communications initiatives for the Source Protection Plan.	\$0	\$0	\$0	\$0	\$0	\$0	\$36,500	\$36,500	\$21,290
Lakehead Source Protection Area	Information management for Source Protection Plan preparation.	\$0	\$0	\$0	\$0	\$0	\$0	\$55,820	\$55,820	\$32,560
Lakehead Source Protection Area	Policy development to address drinking water threats (where required and/or permissible in Act & Regs).	\$0	\$0	\$0	\$0	\$0	\$0	\$0	\$0	\$0
Lakehead Source Protection Area	Policy development for monitoring (where required, advisable and/or permissible in Act & Regs).	\$0	\$0	\$0	\$0	\$0	\$0	\$0	\$0	\$0
Drinking Water	Tasks	Fiscal	Fiscal	Fiscal	Fiscal	Fiscal	Fiscal	Fiscal	Fiscal	Fiscal

Lakehead Source Protection Area Proposed Terms of Reference

(As approved by the Minister of Environment – May 25, 2009)

System Category / Source Protection Area		Year 04/05	Year 05/06	Year 06/07	Year 07/08	Year 08/09	Year 09/10	Year 10/11	Year 11/12	Year 12/13
Lakehead Source Protection Area	Establishing timelines for policy implementation.	\$0	\$0	\$0	\$0	\$0	\$0	\$0	\$0	\$0
Lakehead Source Protection Area	Consultation on the overall proposed Source Protection Plan.	\$0	\$0	\$0	\$0	\$0	\$0	\$27,500	\$27,500	\$9,000
Lakehead Source Protection Area	Other Source Protection Plan Preparation Tasks: Cannot define tasks at this time - Pending Source Protection Plan Regulation and Guidance. Using allocation in 'Other Assessment Report Preparation Tasks' as a guideline.	\$0	\$0	\$0	\$0	\$0	\$0	\$48,000	\$48,000	\$16,000
Municipal Residential Drinking Water Systems	Delineating and applying vulnerability scores to WHPAs or IPZs	\$0	\$0	\$68,250	\$20,567	\$40,828	\$13,000	\$0	\$0	\$0
Municipal Residential Drinking Water Systems	Identifying issues, inventorying threats and assessing hazards in WHPAs or IPZs	\$0	\$0	\$68,750	\$14,521	\$29,643	\$25,000	\$0	\$0	\$0
Municipal Residential Drinking Water Systems	Assess risk in WHPAs or IPZs	\$0	\$0	\$0	\$10,987	\$64,525	\$43,000	\$0	\$0	\$0
Drinking Water Systems By Municipal Resolution	N/A	\$0	\$0	\$0	\$0	\$0	\$0	\$0	\$0	\$0
Drinking Water Systems by Band Resolution	N/A	\$0	\$0	\$0	\$0	\$0	\$0	\$0	\$0	\$0
Drinking Water Systems Included by Minister	N/A	\$0	\$0	\$0	\$0	\$0	\$0	\$0	\$0	\$0
Fiscal Year Total		\$0	\$348,879	\$560,059	\$554,347	\$871,531	\$798,820	\$717,620	\$717,620	\$216,300

Lakehead Source Protection Area Proposed Terms of Reference
(As approved by the Minister of Environment – May 25, 2009)

Process Checklist

Regulatory Process	Completion Date	Done By
Notify band Chiefs on the Commencement of the Terms of Reference.	2008-Feb-08	SPCommittee
Notify Municipal Clerks on the Commencement of the Terms of Reference.	2008-Feb-08	SPCommittee
Post Draft Proposed Terms of Reference on Internet.	2008-Jun-20	SPCommittee
Make the Draft Proposed Terms of Reference available at other locations.	2008-Jun-20	SPCommittee
Notice for consultation on Draft Proposed Terms of Reference includes requests for comments submitted within 35 days of notice published in the newspaper.	2008-Jun-20	SPCommittee
Publish newspaper notice to publicly view draft proposed TOR on Internet and at other locations (as determined by the Source Protection Committee).	2008-Jun-20	SPCommittee
Provide a copy of Draft to the Chiefs of bands whose reserves are located in the Source Protection Area.	2008-Jun-20	SPCommittee
Provide a copy of Draft Proposed Terms of Reference to the Clerks of Municipalities located in the Source Protection Area.	2008-Jun-20	SPCommittee
Give copy of draft proposed ToR to groups created pursuant to Great Lakes Water Quality Agreement & involved in developing/implementing RAPs & LaMPs.	2008-Jun-20	SPCommittee
Provide copy of Draft Proposed Terms of Reference to Chairs of SPC's who have been listed in table that describes matters that affect other Source Protection Areas.	Not applicable to the Lakehead Source Protection Area	Not applicable to the Lakehead Source Protection Area
Municipal Council Resolutions have been passed agreeing upon work.	To be completed after 20/06/08	SPCommittee
Notice for consultation on Draft Proposed Terms of Reference includes information on Public Meeting scheduled at least 21 days after newspaper notice is published.	July 15, 2008 and July 17, 2008	SPCommittee
Give a copy of the comments on Draft Proposed Terms of Reference to the Source Protection Committee.	2008-Aug-06	LRCA Staff
Provide a copy of Proposed Terms of Reference to the Source Protection Authority.	2008-Aug-13	SPCommittee
Provide any unresolved comments from Municipalities and bands to the Source Protection Authority on the Draft Proposed Terms of Reference.	2008-Aug-13	SPCommittee
Post Proposed Terms of Reference on the Internet for 30 days.	2008-Aug-20	SPCommittee
Provide a copy of Proposed Terms of Reference to the Chiefs of bands whose reserves are located in the Source Protection Area.	2008-Aug-20	SPCommittee
Provide a copy of Proposed Terms of Reference to the Clerks of Municipalities located in the Source Protection Area.	2008-Aug-20	SPCommittee
Make provisions to consider Great Lakes Agreements.	2008-Aug-20	SPCommittee
Receive comments from the 30 day Internet posting from the public, Municipalities, bands, and other stakeholders.	2008-Aug-20 – 2008-Sept-18	SPAuthority
Provide any unresolved comments from Municipalities and Bands to the Minister as part of the approval package for the Proposed Terms of Reference.	2008-Oct -20	SPAuthority

Lakehead Source Protection Area Proposed Terms of Reference
(As approved by the Minister of Environment – May 25, 2009)

APPENDIX 1: Full Task Descriptions

Lakehead Source Protection Area Proposed Terms of Reference
(As approved by the Minister of Environment – May 25, 2009)

Appendix 1: Full Task Descriptions

Subject Area	Task Name	Full Task Description
Assessment Report Preparation	Coordinating and supporting projects for the Assessment Report.	Undertaking administrative support, staffing, management support and training necessary to provide project coordination for the Assessment Report components and direct support to the Source Protection Committee.
Assessment Report Preparation	Undertaking communications initiatives for the Assessment Report.	Local area engagement, outreach and creation of communications products that support the Assessment Report process.
Assessment Report Preparation	Information management for the Assessment Report preparation.	Conducting overall data management, data sharing agreements, standards, mapping, software and maintenance.
Assessment Report Preparation	Undertaking a Watershed Characterization Report.	Identifying and describing watersheds in the Source Protection Area. May include water quality analysis and Peer Review for water quality analysis. Details on how to complete this task will be available in the Assessment Report Regulation, Director's Rules and Guidance when they are legislated.
Assessment Report Preparation	Conducting a Conceptual Water Budget.	Describing the overall flow system dynamics for each watershed in the Source Protection Area taking into consideration surface water and groundwater features, land cover (e.g. proportion of urban vs. rural uses), human-made structures (e.g. dams, channel diversions, water crossings), and water takings. Details on how to complete this task will be available in the Assessment Report Regulation, Director's Rules and Guidance when they are legislated.
Assessment Report Preparation	Conducting a Tier 1 Water Budget Analysis and Water Quantity Stress Assessment.	Conducting a Tier 1 Water Budget Analysis, Water Quantity Stress Assessment and delineation of Significant Groundwater Recharge Areas (SGRA's). May also include the identification of water quantity concerns and an analysis of uncertainty. Details on how to complete this task will be available in the Assessment Report Regulation, Director's Rules and Guidance when they are legislated.
Assessment Report Preparation	Conducting a Tier 2 Water Budget Analysis and Water Quantity Stress Assessment.	If determined necessary from a Tier 1 Water Budget Analysis and Water Quantity Stress Assessment, conducting a Tier 2 Water Budget Analysis and Water Quantity Stress Assessment and refining the delineation of Significant Groundwater Recharge Areas (SGRA's). May also include the identification of water quantity concerns and an analysis of uncertainty. Details on how to complete this task will be available in the Assessment Report Regulation, Director's Rules and Guidance when they are legislated.
Assessment Report Preparation	Conducting a Tier 3 Water Budget Analysis and Water Quantity Risk Assessment.	If determined necessary from a Tier 2 Water Budget Analysis and Water Quantity Stress Assessment, conducting a Tier 3 Water Budget Analysis and Water Quantity Risk Assessment. May include identifying significant, moderate and low water quantity threats. May also include consultation with property owners/residents/stakeholders impacted by a significant drinking water threat scoring and an analysis of uncertainty. Details on how to complete this task will be available in the Assessment Report Regulation, Director's Rules and Guidance when they are legislated.
Assessment Report Preparation	Delineating and applying vulnerability scores to Highly Vulnerable Aquifers	Delineating the location and extent of Highly Vulnerable Aquifers (HVA's) in the Source Protection Area and applying vulnerability scores. An uncertainty analysis may be included in this task. Details on how to complete this task will be available in the Assessment Report Regulation, Director's Rules and Guidance

Lakehead Source Protection Area Proposed Terms of Reference

(As approved by the Minister of Environment – May 25, 2009)

	(HVA's).	when they are legislated.
Assessment Report Preparation	Identifying issues, inventorying threats and assessing hazards in Highly Vulnerable Aquifers (HVA's).	Listing and describing drinking water quality issues, inventorying threats and assessing hazards (including uncertainty analysis) in the Highly Vulnerable Aquifers (HVA's). Details on how to complete this task will be available in the Assessment Report Regulation, Director's Rules and Guidance when they are legislated.
Assessment Report Preparation	Assessing risks in Highly Vulnerable Aquifers (HVA's).	Identifying any significant, moderate, low, and negligible drinking water threats, undertaking an issues evaluation, and analyzing uncertainty in highly vulnerable aquifers. Details on how to complete this task will be available in the Assessment Report Regulation, Director's Rules and Guidance when they are legislated.
Assessment Report Preparation	Applying vulnerability scores to Significant Groundwater Recharge Areas (SGRA's).	Applying vulnerability scores to Significant Groundwater Recharge Areas (SGRA's) in the Source Protection Area (delineated in the Water Budget process). Details on how to complete this task will be available in the Assessment Report Regulation, Director's Rules and Guidance when they are legislated.
Assessment Report Preparation	Identifying issues, inventorying threats and assessing hazards in Significant Groundwater Recharge Areas (SGRA's).	Listing and describing drinking water quality issues, inventorying threats and assessing hazards (including uncertainty analysis) in the Significant Groundwater Recharge Areas (SGRA's). Details on how to complete this task will be available in the Assessment Report Regulation, Director's Rules and Guidance when they are legislated.
Assessment Report Preparation	Assessing risk in Significant Groundwater Recharge Areas (SGRA's).	Identifying any significant, moderate, low, and negligible drinking water threats, undertaking an issues evaluation, and analyzing uncertainty in Significant Groundwater Recharge Areas (SGRA's). Details on how to complete this task will be available in the Assessment Report Regulation, Director's Rules and Guidance when they are legislated.
Assessment Report Preparation	Delineating and applying vulnerability scores to Wellhead Protection Area (WHPA's) and/or Intake Protection Zones (IPZ's).	Delineating the location and extent of the vulnerable area around a drinking water system (Wellhead Protection Areas (WHPA's) for drinking water systems using groundwater and/or Intake Protection Zones (IPZ's) for drinking water systems withdrawing from surface water) in the Source Protection Area and applying a vulnerability score. Uncertainty analysis and peer review may be required. In addition, consultation with property owners/residents/stakeholders affected by the delineation and scoring for these two vulnerable areas may be required. Details on how to complete this task will be available in the Assessment Report Regulation, Director's Rules and Guidance when they are legislated.
Assessment Report Preparation	Identifying issues, inventorying threats and assessing hazards in Wellhead Protection Area (WHPA's) and/or Intake Protection Zones (IPZ's).	Listing and describing drinking water quality issues, inventorying threats and assessing hazards (including uncertainty analysis) in Wellhead Protection Area (WHPA's) and/or Intake Protection Zones (IPZ's). Details on how to complete this task will be available in the Assessment Report Regulation, Director's Rules and Guidance when they are legislated.
Assessment Report	Assess risk in Wellhead Protection Area (WHPA's)	Identifying any significant, moderate, low, and negligible drinking water threats, undertaking an issues evaluation, and analyzing uncertainty in Wellhead Protection Area (WHPA's) and/or Intake Protection

Lakehead Source Protection Area Proposed Terms of Reference

(As approved by the Minister of Environment – May 25, 2009)

Preparation	and/or Intake Protection Zones (IPZ's).	Zones (IPZ's). Consultation may be required with stakeholders impacted by significant drinking water threats scoring. Consultation with adjacent Source Protection Areas or Regions may also be required for shared Great Lakes drinking water issues. Details on how to complete this task will be available in the Assessment Report Regulation, Director's Rules and Guidance when they are legislated.
Assessment Report Preparation	Consultation on the overall proposed assessment report	Meeting the legislative and regulatory requirements on the consultation and submission process of the proposed Assessment Report. Details on how to complete this task will be available in the Assessment Report Regulation, Director's Rules and Guidance when they are legislated.
Assessment Report Preparation	Other Assessment Report Preparation Tasks:	If required, add other tasks to complete the Assessment Report. Describe in detail. These tasks to be determined once the Assessment Report Regulation, Director's Rules and Guidance are legislated.
Source Protection Plan Preparation	Coordinating and supporting projects for the Source Protection Plan (SPP)	Undertaking administrative support, staffing, management support, and training necessary to provide project coordination for the Source Protection Plan components and direct support to the Source Protection Committee.
Source Protection Plan Preparation	Undertaking communications initiatives for the Source Protection Plan.	Local area engagement, outreach and creation of communications products that support the Source Protection Plan process.
Source Protection Plan Preparation	Information management for Source Protection Plan preparation.	Conducting overall data management, data sharing agreements, standards, mapping, software and maintenance.
Source Protection Plan Preparation	Policy development to address drinking water threats (where required and/or permissible in Act & Regs)	Policy development to address drinking water threats (where required and/or permissible in the Act and source protection plan regulation). Detailed requirements and guidance will be provided in the Source Protection Plan Regulation and Guidance Document when they are legislated.
Source Protection Plan Preparation	Policy development for monitoring (where required, advisable and/or permissible in Act & Regs)	Policy development for monitoring activities (where required, advisable and/or permissible in the "Act "and Source Protection Plan Regulation), including determining who is responsible for implementing these policies. Detailed requirements and guidance will be provided in the Source Protection Plan Regulation and Guidance Document when they are legislated.
Source Protection Plan Preparation	Policy development for Great Lakes elements (where required/permissible in Act & Regs)	Policy development for Great Lakes associated elements (where directed by the Minister and required or permissible in the Act and Source Protection Plan Regulation), including monitoring policies to assist in implementing and determining the effectiveness of achieving Great Lake target(s) policies, determining who is responsible for implementing those policies, and determining the need to identify any of these policies as "designated Great Lakes policies". Detailed requirements and guidance will be provided in the Source Protection Plan Regulation and Guidance Document when they are legislated.
Source Protection Plan Preparation	Establishing timelines for policy implementation.	Establishing timelines for policy implementation after all policies for the Source Protection Plan are developed, giving consideration to the policies developed, key players affected, capacity for

Lakehead Source Protection Area Proposed Terms of Reference

(As approved by the Minister of Environment – May 25, 2009)

		implementation, the assessed risks, and natural, social, and economic considerations, including local community interests/needs. Detailed requirements and guidance will be provided in the Source Protection Plan Regulation and Guidance Document when they are legislated.
Source Protection Plan Preparation	Consultation on the overall proposed Source Protection Plan.	Consultation and submission process of the overall proposed Source Protection Plan. Details on how to conduct the consultations on the overall proposed Source Protection Plan will be provided in the Source Protection Plan Regulation and Guidance Document when they are legislated.
Source Protection Plan Preparation	Other Source Protection Plan Preparation Tasks:	If required, add other tasks to complete the Source Protection Plan. Describe in detail. These tasks to be determined once the Source Protection Plan Regulation and Guidance Document are legislated.